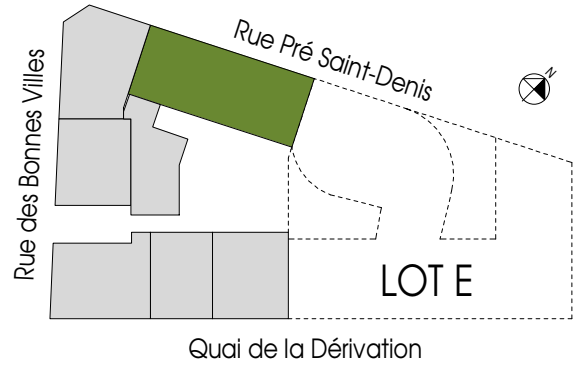


{ BAVIÈRE

RECONSTRUIRE. RECONNECTER. REVIVRE.

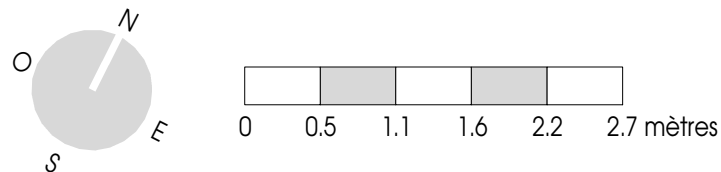


APPARTEMENT D5.03.6

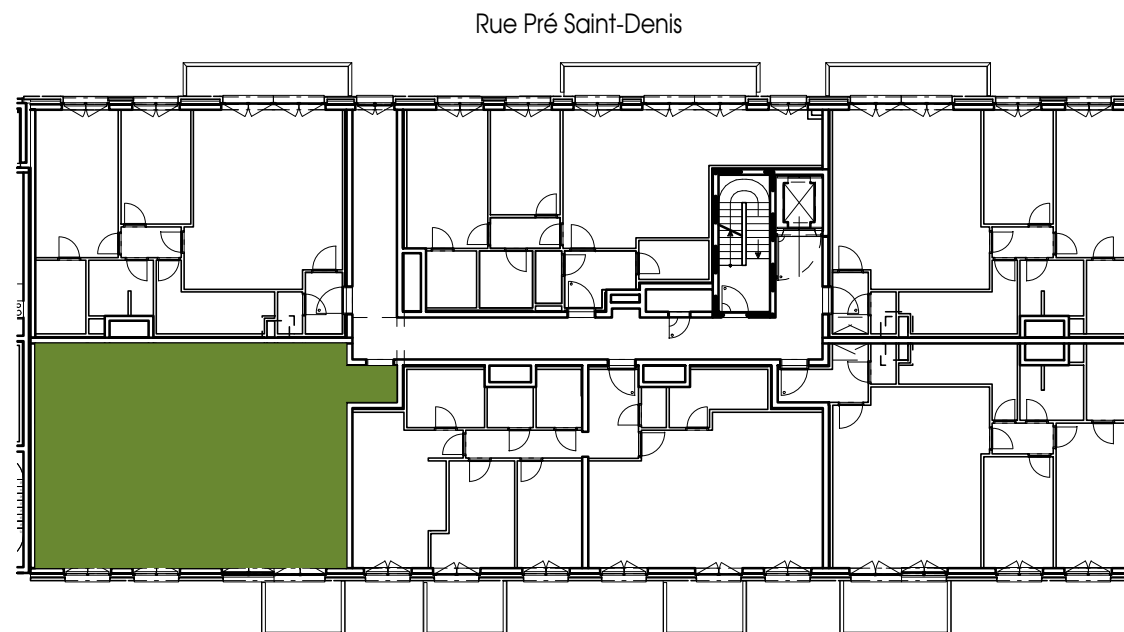
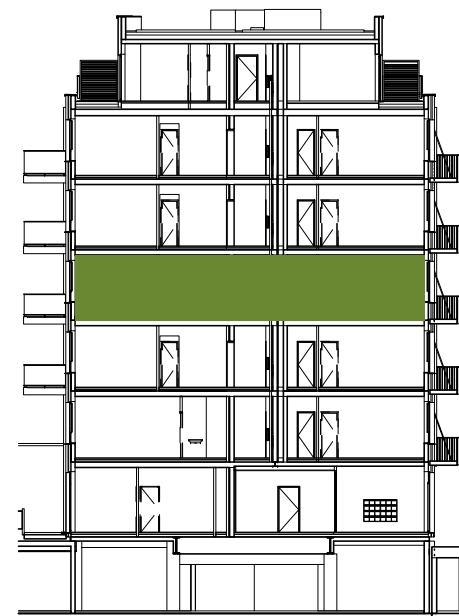
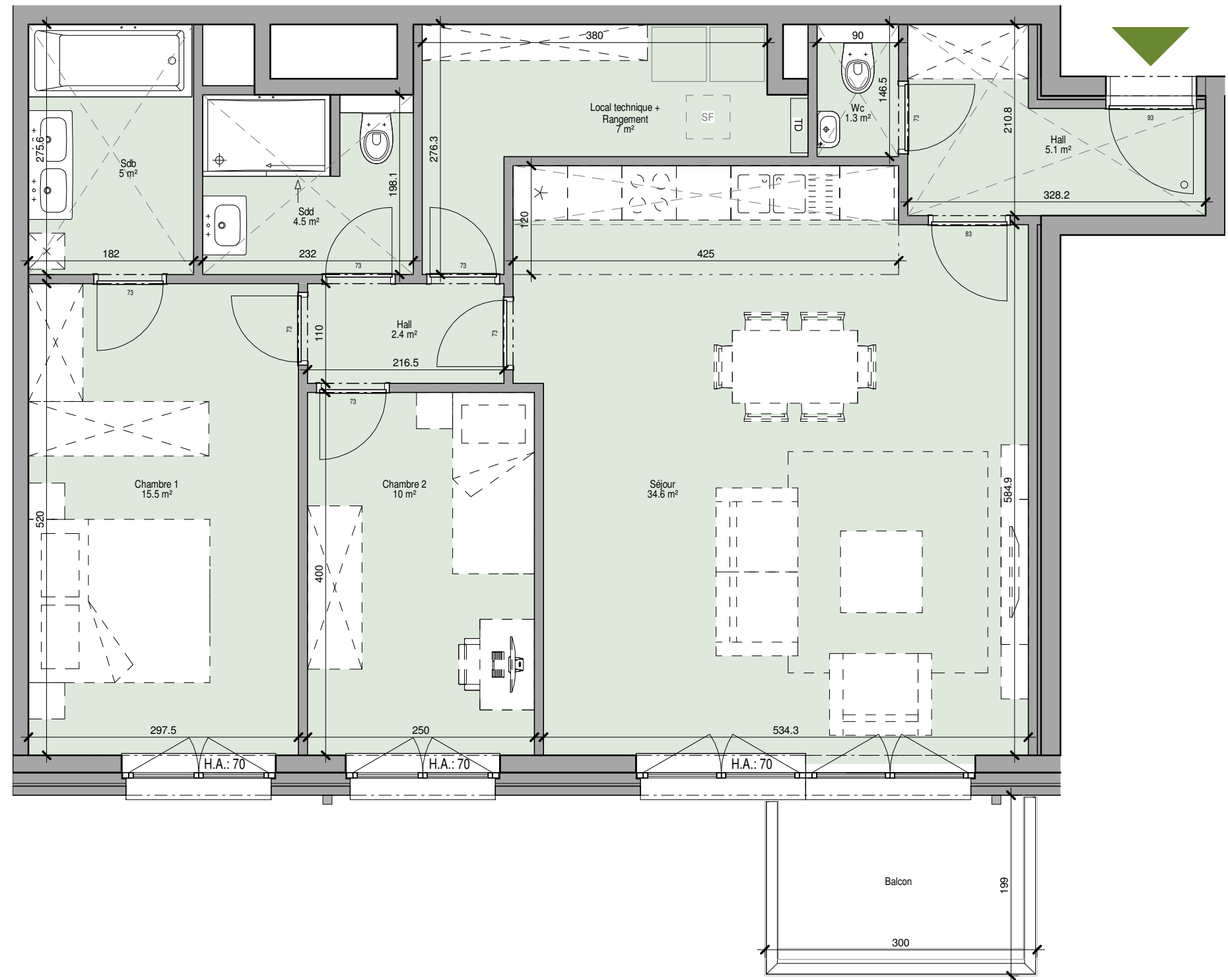
Immeuble **D5**
 Etage **+3**
 Chambre **2**
 Surface brute **101.8** m²
 Surface balcon/terrasse **6** m²

Légende

- [SF] Simple-flux
- [---] Faux-plafond
- [---] Poutre
- [---] Carrelage
- H.A.: 0 Hauteur allège par défaut = 0, sauf mention contraire



DOCUMENT NON CONTRACTUEL,
MOBILIER ET CUISINE A TITRE INDICATIF



BAVIÈRE DEVELOPPEMENT SA
 5 rue Sainte-Marie - 4000 Liège
 info@baviere-liege.be